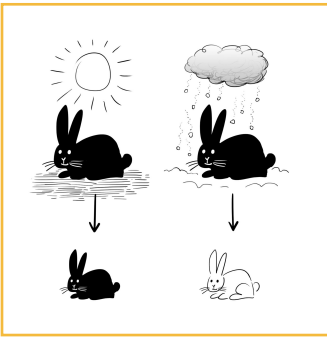


Unit L3 • Traits and Heredity

Evaluating Theories

With a partner, use the text in the Scene to complete the chart below:

male = ♂ female = ♀



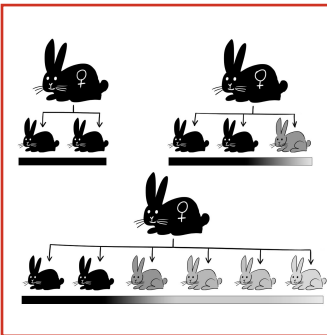
the weather theory

Who mentioned this idea? Keara Jordan Alexis Klent

How did he or she think this “theory” worked?

On a scale from 1 to 5, how plausible do you think this theory is? (circle one)

- | | | | | |
|----------------------|----------|----------------|--------------------|------------------|
| 1 | 2 | 3 | 4 | 5 |
| not plausible at all | unlikely | neutral/unsure | somewhat plausible | highly plausible |



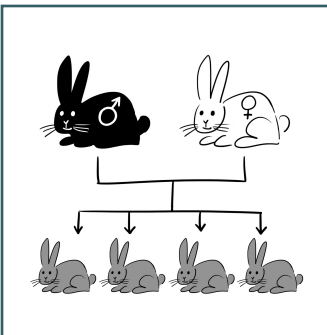
the fade-out theory

Who mentioned this idea? Keara Jordan Alexis Klent

How did he or she think this “theory” worked?

On a scale from 1 to 5, how plausible do you think this theory is? (circle one)

- | | | | | |
|----------------------|----------|----------------|--------------------|------------------|
| 1 | 2 | 3 | 4 | 5 |
| not plausible at all | unlikely | neutral/unsure | somewhat plausible | highly plausible |



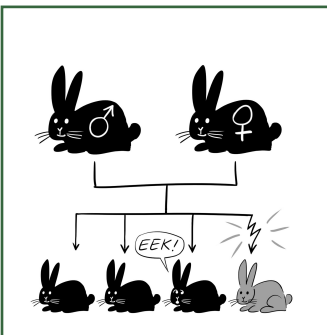
the blending theory

Who mentioned this idea? Keara Jordan Alexis Klent

How did he or she think this “theory” worked?

On a scale from 1 to 5, how plausible do you think this theory is? (circle one)

- | | | | | |
|----------------------|----------|----------------|--------------------|------------------|
| 1 | 2 | 3 | 4 | 5 |
| not plausible at all | unlikely | neutral/unsure | somewhat plausible | highly plausible |



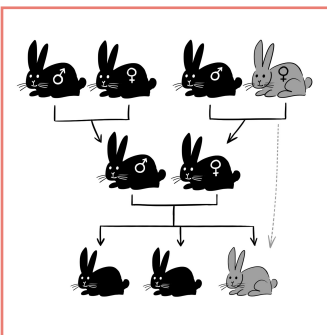
the mutant theory

Who mentioned this idea? Keara Jordan Alexis Klent

How did he or she think this “theory” worked?

On a scale from 1 to 5, how plausible do you think this theory is? (circle one)

- | | | | | |
|----------------------|----------|----------------|--------------------|------------------|
| 1 | 2 | 3 | 4 | 5 |
| not plausible at all | unlikely | neutral/unsure | somewhat plausible | highly plausible |



the grandparent theory

Who mentioned this idea? Keara Jordan Alexis Klent

How did he or she think this “theory” worked?

On a scale from 1 to 5, how plausible do you think this theory is? (circle one)

- | | | | | |
|----------------------|----------|----------------|--------------------|------------------|
| 1 | 2 | 3 | 4 | 5 |
| not plausible at all | unlikely | neutral/unsure | somewhat plausible | highly plausible |

